

## LOCAL CONTROL STATIONS

### CP../CPS.. Series - Copper-free aluminium



- The CP../CPS.. range of enclosures, used for terminals wiring, grants Ex d mode of protection and is suitable for hazardous areas of industrial plants for indoor and outdoor applications.
- Made of copper-free aluminium and complete with threaded hubs suitable for cable glands or conduit, connection does not affect the internal void, which remains available for terminals wiring
- Internal and external screws are made of AISI316 stainless steel.

#### MARKING

II 2 G  
 Ex db IIC T6 or T5 or T4 Gb or  
 II 2 (1) G  
 Ex db [ ia Ga] IIC T6 Gb or  
 II 2 (2) G  
 Ex db [ ib] IIC T6 Gb

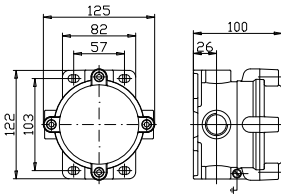
II 2 D  
 Ex tb IIIC T85°C or T100°C or T135°C  
 Db IP66 or  
 II 2 (1) D  
 Ex tb [ ia Da] IIIC T85°C Db IP66 or  
 II 2 (2) D  
 Ex tb [ ib] IIIC T85°C Db IP66

## TECHNICAL FEATURES

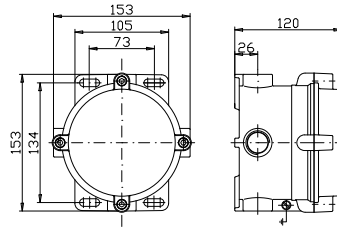
<b>Material</b>	Copper-free aluminium
<b>IP rating</b>	IP66
<b>Ambient temperature range</b>	-60°C to +60°C (ATEX) -60°C to +60°C (IECEX)
<b>Approvals</b>	INERIS 03ATEX0009X IECEX BKI 15.0002 EAC: RU C-IT.BH02.B.00588/20
<b>Surface treatment</b>	<ul style="list-style-type: none"> <li>• Painted by polyurethane painting: Blue RAL5014 ( other colours on request) painting cycle C4 suitable for On-Shore</li> <li>• External environment: Industrial areas and coastal areas with moderate salinity</li> <li>• Internal environment: Chemical plants, swimming pools, coastal plants and shipyards</li> </ul> The Reference standard is UNI EN ISO 12944-1:2018
<b>Thread</b>	ISO: M20, M25, M32 NPT:1/2", 3/4", 1"
<b>Standard certificate label</b>	Made by self adhesive UV and corrosion resistant polyester, approved by certified Laboratory
<b>Optional accessories</b>	Internal anticondensate painting Terminals
<b>Maximum number of terminals</b>	(15 x 2,5 mm <sup>2</sup> /12 x 4 mm <sup>2</sup> /8 x 6 mm <sup>2</sup> )
<b>Max. rated voltage</b>	1000 Vdc 20 kVac

## Dimensions CP../CPS..

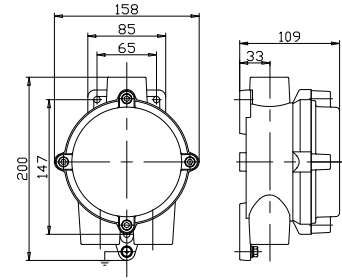
TAB-A



TAB-B



TAB-C



### CP../CPS.. Series - Available versions

TYPE	AVAILABLE ENTRIES				CONFIGURATION OF ENTRIES	ENCLOSURE DIAMETER [mm]	DRAWING
	METRIC		NPT				
CPC-..	2 X M20	2 X M25	2 X 1/2" NPT	2 X 3/4" NPT		90	TAB-A
CPSC-..	2 X M25	2 X M32	2 X 3/4" NPT	2 X 1" NPT		120	TAB-B
CPT-..	3 X M20	3 X M25	3 X 1/2" NPT	3 X 3/4" NPT		90	TAB-A
CPST-..	3 X M25	3 X M32	3 X 3/4" NPT	3 X 1" NPT		120	TAB-B
CPSG-..	3 X M25	3 X M32	3 X 3/4" NPT	3 X 1" NPT		120	TAB-C
CPX-..	4 X M20	4 X M25	4 X 1/2" NPT	4 X 3/4" NPT		90	TAB-A
CPSX-..	4 X M25	4 X M32	4 X 3/4" NPT	4 X 1" NPT		120	TAB-B

### CP../CPS.. Series - Standard versions\*

CODE**	TYPE	N° OF ENTRIES	TYPE OF ENTRIES	CONFIGURATION OF ENTRIES	WEIGHT [Kg]	ENCLOSURE DIAMETER [mm]
B011074010080	CPC-16 2XM20	2	M20		1	90
B011074010071	CPC-16 2X1/2" NPT	2	1/2" NPT		1	90
B011074010081	CPC-26 2XM25	2	M25		1,1	90
B011074010072	CPC-26 2X3/4" NPT	2	3/4" NPT		1,1	90
B011074010082	CPT-16 3XM20	3	M20		1	90
B011074010077	CPT-16 3X1/2" NPT	3	1/2" NPT		1	90
B011074010083	CPT-26 3XM25	3	M25		1,1	90
B011074010075	CPT-26 3X3/4" NPT	3	3/4" NPT		1,1	90
B011074010076	CPX-16 4XM20	4	M20		1	90
B011074010084	CPX-26 4XM25	4	M25		1,1	90
B011074010085	CPX-26 4X3/4" NPT	4	3/4" NPT		1,1	90
B011074010086	CPSC-26 2XM25	2	M25			1,7
B011074010087	CPSC-26 2X3/4" NPT	2	3/4" NPT	1,7		120
B011074010088	CPSC-36 2XM32	2	M32	1,8		120
B011074010073	CPSC-36 2X1" NPT	2	1" NPT	1,8		120
B011074010089	CPSG-26 3XM25	3	M25		1,7	120
B011074010090	CPSG-26 3X3/4" NPT	3	3/4" NPT		1,7	120
B011074010091	CPSG-36 3XM32	3	M32		1,8	120
B011074010092	CPSG-36 3X1" NPT	3	1" NPT		1,8	120
B011074010093	CPST-26 3XM25	3	M25		1,7	120
B011074010094	CPST-26 3X3/4" NPT	3	3/4" NPT		1,7	120
B011074010095	CPST-36 3XM32	3	M32		1,8	120
B011074010074	CPST-36 3X1" NPT	3	1" NPT		1,8	120
B011074010096	CPSX-26 4XM25	4	M25		1,7	120
B011074010097	CPSX-26 4X3/4" NPT	4	3/4" NPT		1,7	120
B011074010098	CPSX-36 4XM32	4	M32		1,8	120
B011074010099	CPSX-36 4X1" NPT	4	1" NPT		1,8	120

Codes refer to empty enclosures. For complete junction boxes ask to our Sales Dept.

\*CP.. Series are supplied ATEX/TR-CU certified. For IECEx certificate, ask to our Sales Dept.